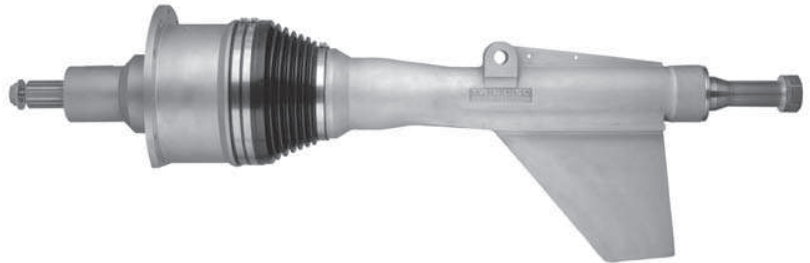


ASD 14**ARNESON SURFACE DRIVE****DESCRIPTION****BRONZE IN-LINE (ASD14BIL)**

Bronze thrust assembly
 Internal lube oil reservoir
 Steering cylinder with external hoses and fittings
 Trim cylinder with external hoses and fittings
 Standard (or optional longer) fin
 Installation manual, owners manual and drive ball
 wrench (one per ship set)

**ACCESSORIES**

Anode kit
 Cylinder position indicator kits with gauge
 Hydraulic power steering system
 Gearbox adapter
 Driveline (cardan shaft)
 Companion (input) flange
 Tie-bar (mechanical or hydraulic – for multiple
 engine vessels)
 Inboard cylinder mounting kit
 Propeller

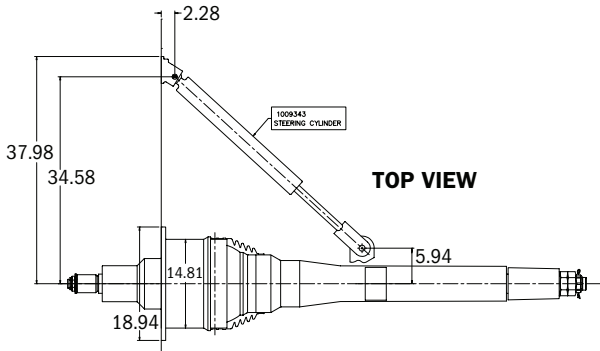
TECHNICAL DATA – ASD14BIL

Reduction Ratio	1.00:1
Maximum Input Torque	8000 ft-lbs
Unit Weight	1135 lbs
Overall Length from Transom	71 in
Nominal Shaft Diameter	3.5 in
Steering Angle Degree	40 degrees
Trim Angle Degree	15 degrees

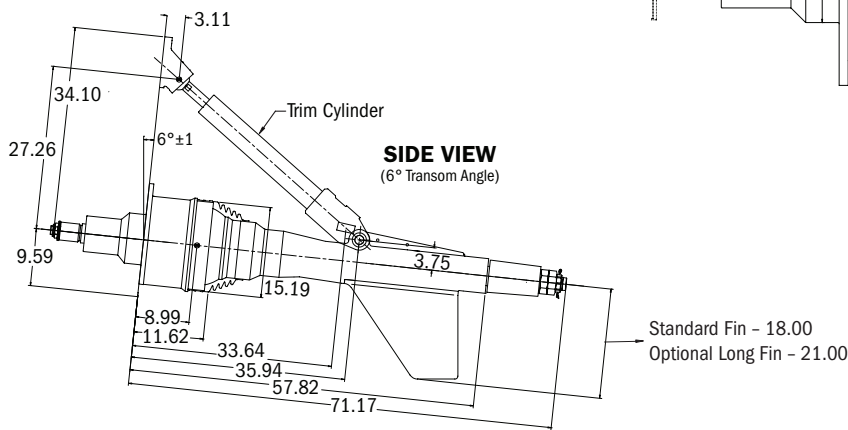
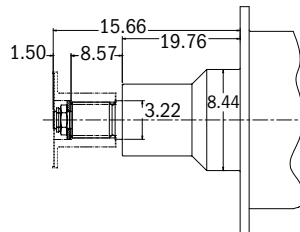
Contact your local Twin Disc representative for engineering specifications.
 Specifications subject to change without prior notice in the interest of continual product improvement.



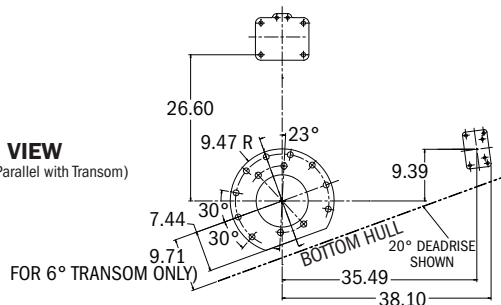
ASD 14 IN-LINE SURFACE DRIVE SCHEMATICS



INPUT SHAFT DETAIL



END VIEW (Dimensions are Parallel with Transom)



Twin Disc, Incorporated reminds users of these products that their safe operation depends on use in compliance with engineering information provided in our catalog. Users are also reminded that safe operation depends on proper installation, operation and routine maintenance and inspection under prevailing conditions. It is the responsibility of users (and not Twin Disc, Incorporated) to provide and install guards or safety devices which may be required by recognized safety standards or by the Occupational Safety and Health Act of 1970 and its subsequent provisions.

United States of America • Australia • Belgium • France • Italy • Singapore • Switzerland



Twin Disc, Incorporated
Racine, Wisconsin 53403 USA
Phone +1-262-638-4000
Fax +1-262-638-4482
www.twindisc.com

TD-Bulletin-ASD14
© 2009, Twin Disc, Incorporated
Printed in the USA - 04/2009